

Daily Weather Update

Coastal Area Around The Sri Lanka

Information Fusion Center-Colombo



Information Fusion Center
Colombo
Sri Lanka

Date 2026.01.07



WEATHER FORECAST FOR SEA AREAS AROUND THE ISLAND DURING NEXT 24 HOURS

Issued at 05.30 a.m. on 07 January 2026



**DEPARTMENT OF METEOROLOGY
SRI LANKA**

CONDITION OF THE RAIN

Showers will occur at several places in the sea areas off the coast extending from Kankasanthurai to Matara via Trincomalee and Pottuvil. Showers or thundershowers may occur at several places in the other sea areas around the island in the evening or night

WINDS

Winds will be north-easterly and wind speed will be (30-40) kmph.
Wind speed can increase up to (60-70) kmph at times in the sea areas off the coast extending from Kankasanthurai to Hambantota via Trincomalee and Pottuvil

Wind speed can increase up to (50-60) kmph at times in the sea areas off the coast extending from Beruwala to Kankasanthurai via Colombo and Puttalam

STATE OF SEA

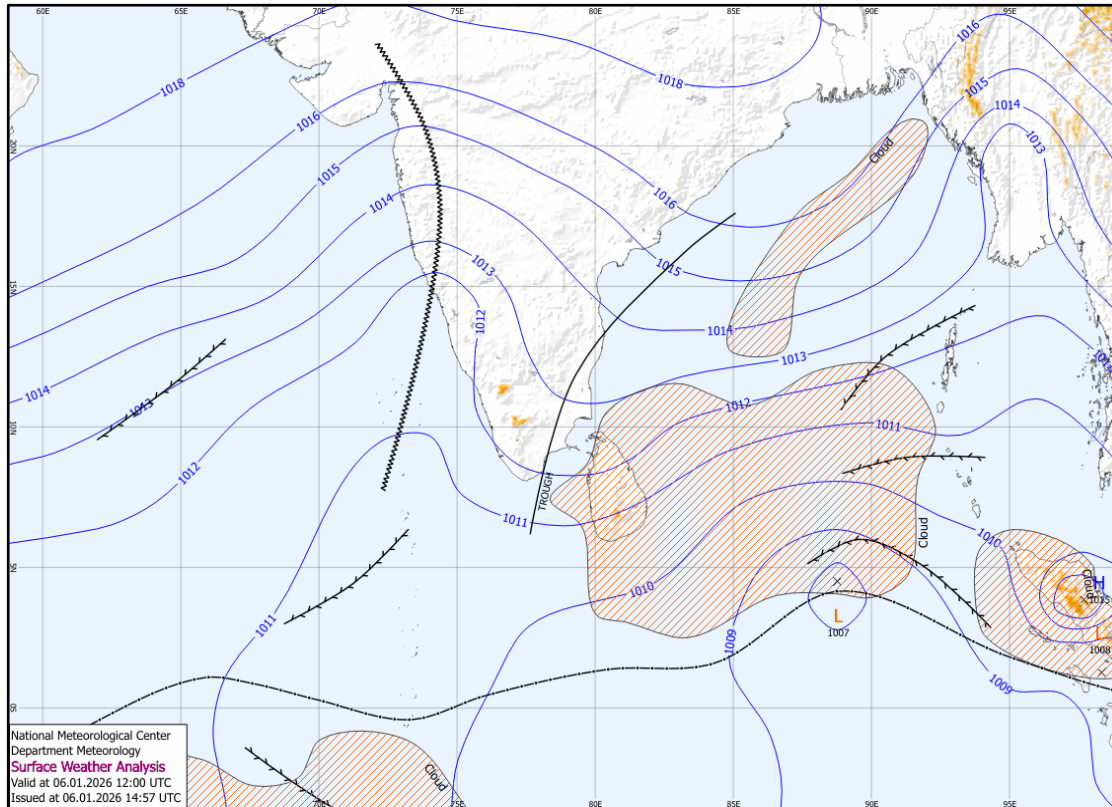
The sea areas off the coast extending from Kankasanthurai to Hambantota via Trincomalee and Pottuvil will be rough to very rough at times

The sea areas off the coast extending from Beruwala to Kankasanthurai via Colombo and Puttalam will be rough at times

The other sea areas around the island may be moderate

The wave height may increase (about 2.5 – 3.0 m) in the sea areas off the coast extending from Kankasanthurai to Pottuvil via Trincomalee (this is not for land area)

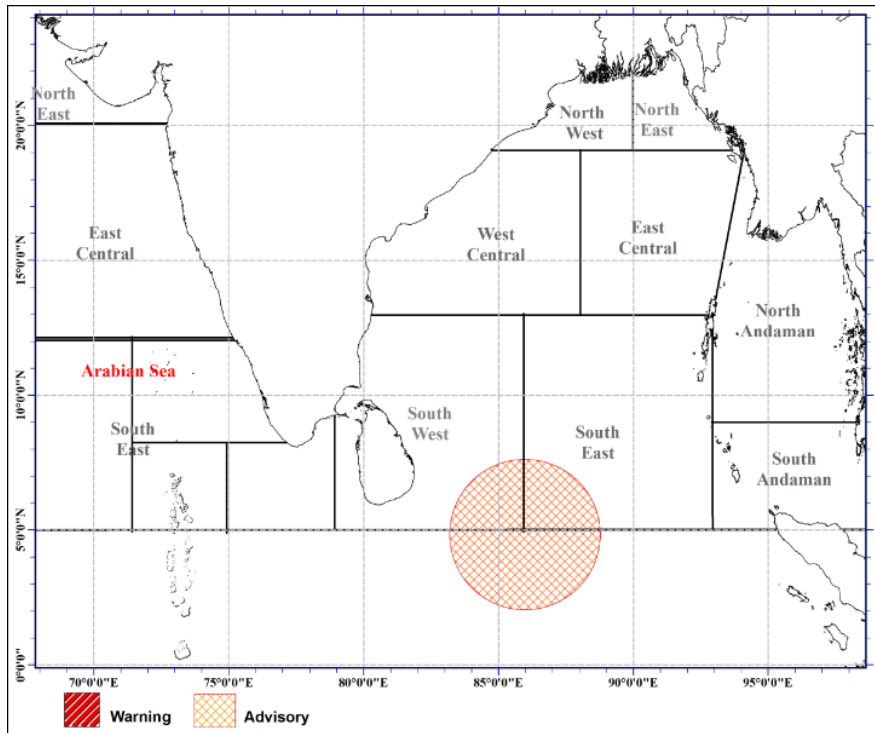
SURFACE ANALYSIS CHART



This analysis charts show the surface pressure pattern over Sri Lanka and the surrounding area. They display isobars (lines of equal pressure) and indicate areas of high (H) and low pressure (L) along with their central pressure value. Isobars are represented by solid blue lines, spaced every 1 hPa. High pressure is usually associated with mainly dry, settled weather with light winds, while low pressure is normally associated with unsettled weather, which is often wet and windy. The lower the pressure, generally the stronger the winds and the heavier the rain

The map shows Coordinated Universal Time (UTC) and the local time is UTC+5.30.

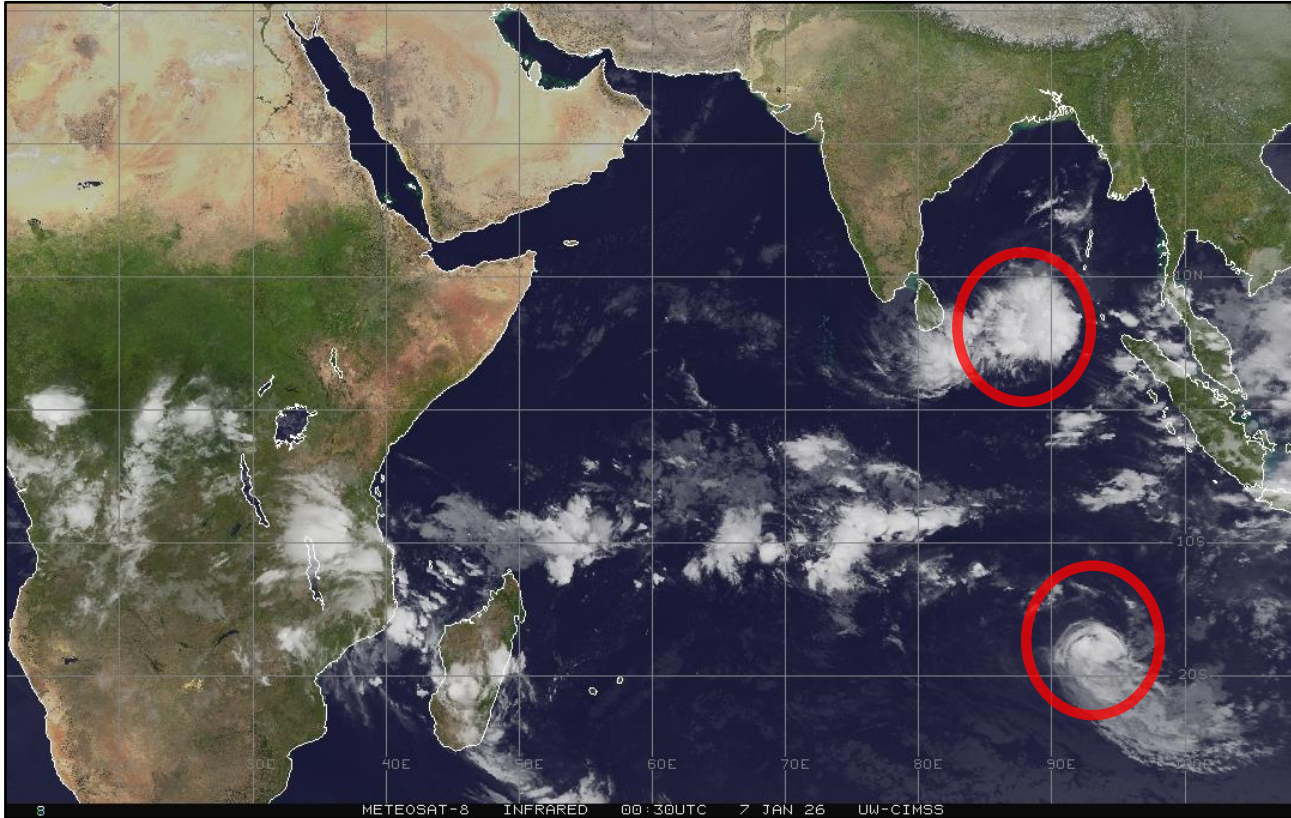
ADVERSARY



Advisory for Low Pressure Area over Southeast Bay of Bengal.
Issued at 12.30 pm on 06 January 2026 for the period until 12.30 p.m. 07th January 2026.

The low-pressure area in the Bay of Bengal, to the southeast of the Sri Lanka is likely intensify into a depression during next 24 hours. This system is expected to move towards the east coast of the island. Hence, showery condition over the island, particularly in the Northern, North- Central, Eastern, Uva and Central provinces is expected to enhance from January 8th.

SATELLITE IMAGE





Information Fusion Center
Colombo
Sri Lanka

THANK YOU

The Officer Incharge
Information Fusion Centre - Colombo
Naval Headquarters, Colombo, Sri Lanka
+94 11 719 480 6
+94 74 120 4829
ifc@navy.lk
ifc.cbo@gmail.com